



Breeding Rainbow Budgies

Definition - Blue, Opaline, Clearwing, Yellowface**

Variants - Spangle, Pied, Greywing, Goldenface, Violet (dark factor)

Rainbows are made up of both sex-linked (Opaline) are recessive genes (Clearwing) so breeding these from scratch will take some patience. Depending on what birds you have available it may take you a few seasons to perfect your rainbow birds.

Suggested breeding - Breed a yellow faced blue opaline x clearwing to produce a yellow face male that is split for both opaline and clearwing. Mate this bird to a clearwing female and some of the chicks should be rainbow females.

If one of these rainbow females is mated to another yellow face blue that is split for both opaline and clearwing you would get rainbows of both sexes

The addition of a violet factor or using golden face instead of either of the normal yellow face mutations could make the result even more appealing.

Speak to a club member about what birds you have available and we will help in sourcing correct birds or documenting a plan to breed Rainbows from what you already have.

**** World Budgie Organization definition however subjective as there is no official Australian standard**

Images



Images



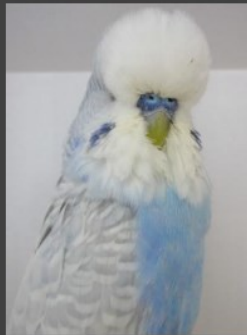
Blue, Goldenface, Opaline, Clearwing



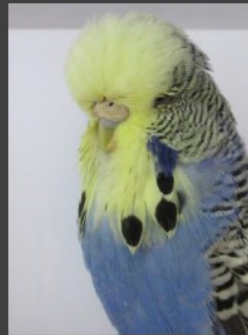
Violet, Goldenface, Spangle, Opaline, Dominant Pied



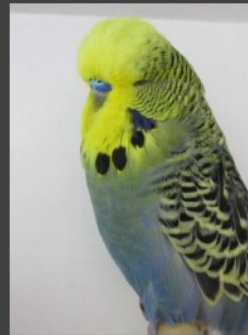
Opaline



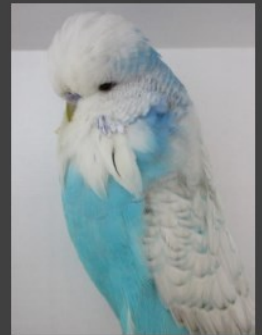
Clearwing



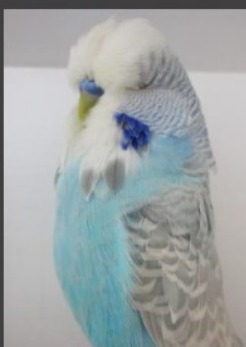
Yellowface



Goldenface



Spangle



Greywing



Recessive Pied



Dominant Pied



Violet

All information available on the club website

www.unitedbudgies.org.au